



PRESENTED BY  
**illumina**<sup>®</sup>  
 CORPORATE FOUNDATION

**P** PADRES PARKADE  
 \$10 PARKING

**FACEPAINTERS**

SATURDAY, MARCH 1, 2025

You can also view map online at  
**LoveStemSD.org**



**YOU DON'T WANT TO MISS!**  
 The opportunity to knit caps for Rady Children's Hospital with our special guests, Madhatter Knits. No skill level required.  
 Workshops at:  
 10:30AM, 1:00PM, & 3:00PM  
 inside the Art Pavilion.

**PHOTO OPP & GIVEAWAY**  
 Post a photo and use #GenSTEAMGiveaway for a chance to win a free STEAM Summer Camp!

**SCHOOL BUS DROP OFF ZONE**

**TAILGATE LOT \$10 PARKING**

**HIGH SCHOOL STUDENT?**  
 Join us at 11:00AM & 2:00PM in College & Career Connections for a special panel of speakers about the transition from High School to College.



- ADA Accessible
- Kids Meal Locations
- Cybersecurity Zone (Right Field)
- Art Pavilion (Lexus Premier Club)
- College & Career Connections (The Draft)
- First Aid
- Bus Stop
- Construction Corner (Gallagher Square)
- Information Booth
- Metropolitan Transit System
- Robotics Roundup (Right Field)
- Water Refill Station
- Merchandise Booth
- Pre-K Zone (Gallagher Square)
- Illumina Corporate Foundation Main Stage
- Parking
- Restrooms
- Kenai Therapeutics Future Innovators Stage

## STAGE SCHEDULE

### **A** ILLUMINA CORPORATE FOUNDATION MAIN STAGE

- |   |   |
|---|---|
| <b>10:10 AM...</b> STEAM Concert by Music Notes         | <b>1:00PM...</b> Mad Science: Fire and Ice  |
| <b>10:30 AM...</b> Science Guys: Frostbite Frenzy       | <b>2:00 PM...</b> Fleet Science Center: Don't Try This at Home - Subzero Spectacular! |
| <b>11:10 AM...</b> The STEMusic Concert Live!           | <b>2:45 PM...</b> Promo Drone   |
| <b>11:55 AM...</b> Ecovivarium: Cool Critters Eat Right | <b>3:00 PM...</b> General Atomics   |
| <b>12:40 PM...</b> STEAM Concert by Music Notes         | <b>3:45 PM...</b> The STEMusic Concert Live!  |

### **B** KENAI THERAPEUTICS FUTURE INNOVATORS STAGE

- |  |   |
|--|---|
| <b>10:45 AM...</b> STEAM Concert by Music Notes                          | <b>1:15 PM...</b> STEAM Concert by Music Notes                          |
| <b>11:00 AM...</b> Cajon Valley Union School District TEEd Student Talks | <b>1:30 PM...</b> Cajon Valley Union School District TEEd Student Talks |
| <b>11:45 AM...</b> Cajon Valley Union School District TEEd Student Talks | <b>2:15 PM...</b> Cajon Valley Union School District TEEd Student Talks |
| <b>12:30 PM...</b> Cajon Valley Union School District TEEd Student Talks | <b>3:00 PM...</b> Cajon Valley Union School District TEEd Student Talks |

# SPECIALTY AREAS



## ART PAVILION LEXUS PREMIER CLUB

The Art Pavilion serves as a vibrant canvas for students and community groups to showcase their creative expressions, infusing the STEM experience with artistic flair. Roll up your sleeves and join Madhatter Knits in knitting caps for Rady Children's Hospital at 10:30AM, 1:00PM, and 3:00PM. Powered by Biology through Art, Museum of Contemporary Art San Diego, and National University



## COLLEGE AND CAREER CONNECTIONS THE DRAFT

For middle and high school students: visit College and Career Connections to explore various education and career pathways and to create meaningful connections with higher education partners. Join us for panel discussions with college students from 11:00AM - 11:45AM and 2:00PM - 2:45PM. Powered by U.S. Army



## CONSTRUCTION CORNER GALLAGHER SQUARE

Get ready to build, design, and explore the world of construction and engineering at Construction Corner! This hands-on zone introduces students and attendees to the exciting fields of architecture, civil engineering, and more.



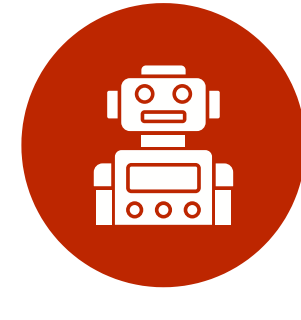
## CVBERSECURITY ZONE RIGHT FIELD

Step into the Cybersecurity Zone, where the digital world meets hands-on exploration! This interactive space empowers students and attendees to dive into the fundamentals of online safety, ethical hacking, encryption, and cyber defense. Powered by ESET



## PRE K ZONE GALLAGHER SQUARE

For San Diego's littlest learners: join us at the Pre-K Zone for face painting, straw rockets, paper robots, practice counting, and more! Powered by TOOTRIS Child Care On-Demand



## ROBOTICS ROUNDUP RIGHT FIELD

Stop by NDIA's Robotics Roundup to explore the fun of robotics! Local high school clubs, the NDIA team, and more will show you how to master the fundamentals of robotics. Powered by National Defense Industrial Association

# EXHIBITORS

## LOCATION KEY

- HP: Home Plate
- LP: Lexus Premier Club
- PA: Power Alley
- RF: Right Field
- CC: College & Career
- LF: Left Field
- G: Gallagher Square
- PB: Park Blvd
- WM: Western Metal
- AP: Art Pavilion

- RF19** Air & Space Forces Association
- WM8** Ambasad Space Satellite
- PB6** American Physical Therapy Association
- G1** America's Navy
- CC** America's Navy Recruitment
- LF1** Arcturus Therapeutics
- LF18** ASME San Diego
- HP4** ASML
- G22** Balfour Beatty
- PA2** Biodiesel & Algal Studies Group
- AP** Biology through Art
- G23** Biozenic
- G18** BLUE HAVEN POOLS
- RF21** Booz Allen Hamilton
- LP5** Bostonia Global High School Maker Club
- G8** Bristol Myers Squibb
- CC** Cal State University San Marcos
- CC** California Miramar University
- LP4** Camp Galileo
- RF9** CART Youth Foundation
- RF16** centrxIT
- AP** Cindy Jenson-Elliot, The Doomsday Detectives
- PB5** CITY OF SAN DIEGO Public Utilities Department
- RF1** Collins Aerospace
- CC** Cuyamaca College
- RF15** Cyber Center of Excellence (CCOE)
- G28** DPR Construction
- WM5** DRS Daylight Solutions
- WM1** Earth Discovery Institute
- PA4** EcoVivarium
- RF17** Eddie Teaches IT
- CC** Education to Career Network
- G20** Educreate
- LF13** Elementary Institute of Science
- WM4** Empresa Performing Arts Foundation and Play-Well TEKologies
- RF22** ESET
- CC** First Gen Scholars
- G10** Fleet Science Center
- LF4** GemKids by The Gemological Institute of America
- HP3** Genentech, A Member of the Roche Group
- G21** General Atomics
- CC** General Atomics
- G27** Gensler
- CC** Grand Canyon University
- LF8** Greater San Diego Science and Engineering Fair
- RF3** GRIFOLS
- CC** Grossmont College
- RF26** Hands-On Technology Education
- WM7** Helen Woodward Animal Center
- RF25** Hologic
- LF15** I Love A Clean San Diego
- G34** Illumina Corporate Foundation
- AP** Ilya Sobal, Izobrulo Art
- PB4** Impalas Car Club

- RF14** ISACA San Diego
- WM3** J. Craig Venter Institute
- AP** Jim Melli
- G15** Johnson & Johnson
- AP** Jonathan M. Henry, 3D Praxinscope
- G30** KPBS Kids
- RF5** Kenai Therapeutics
- PB2** La Jolla Institute for Immunology
- RF7** Lilly, A Medicine Company
- LP1** Live Well San Diego
- LF7** Living Coast Discovery Center
- G32** Mad Science of San Diego
- RF2** Magnolia Science Academy San Diego
- LP2** Maravai LifeSciences Foundation
- WM9** Math Happens
- G25** McCarthy Building Companies, Inc.
- RF11** Mechanical Advantage
- AP** Mia Grace Morel
- AP** Michael Flohr
- G33** MilliporeSigma
- AP** Museum of Contemporary Art San Diego
- RF13** National Defense Industrial Association
- AP** National University
- CC** National University
- HP1** NAVAIR - FRCSW
- HP2** Naval Information Warfare Center Pacific
- LF2** Neurocrine Biosciences
- G5** Novartis
- LF17** NSF Center for Synthetic Organic Electrochemistry
- G16** NXP Semiconductors
- WM6** OUTbio San Diego
- AP** Patrick Henry High School
- RF8** PhyzAI
- AP** Pioneesta
- CC** Point Loma Nazarene University
- LP6** Poway Unified School District
- G3** Pure Water San Diego
- G6** Qualcomm Incorporated
- RF10** Robotics FTC Team : High Voltage 18263
- LP3** Rogalski Arts from Patrick Henry High
- G12** Russian School of Math
- G13** Sally Ride Science Summer Academy - UCSD Extended Studies
- G31** San Diego Children's Discovery Museum
- RF23** San Diego City College
- CC** San Diego City College
- G7** San Diego Community Power
- RF4** San Diego County Office of Education
- G2** San Diego County Water Authority
- LF9** San Diego International Airport
- CC** San Diego Mesa College

- PA3** San Diego Mesa College Psi Beta
- LF3** San Diego Metropolitan Transit System
- CC** San Diego Miramar College
- LF10** San Diego Miramar College, Biotech
- WM2** San Diego Natural History Museum
- LP "M"** San Diego Padres
- LF19** San Diego Public Library
- HP5** San Diego State University
- CC** San Diego State University
- RF20** San Diego State University Cybersecurity Center for Research and Education & SDSU Cyber Defense Team
- G14** Scripps Institution of Oceanography, University of California San Diego
- PB1** SDAALAS
- G19** SDCCU
- HP5** SDSU Center for Autism and Developmental Disorders
- HP5** SDSU Marine Ecology & Biology Student Association
- HP5** SDSU Schwartz Astronomical Society
- HP5** SDSU Society of Hispanic Professional Engineers
- HP5** SDSU Society of Physics Students
- HP5** SDSU Society of Women Engineers
- HP5** SDSU Virtual Immersive Teaching and Learning Research Center
- HP5** SDSU Women in Physics
- WM6.5** Senator Blakespear
- WM10** Senator Padilla
- AP** Shandra Zawacki
- AP** Shapes to Forms
- LF15** SHPE & SWE, San Diego Professional Chapter
- CC** Society of Hispanic Engineers, UCSD Chapter
- CC** Southwestern College
- G24** STARC Systems
- G26** SYSTRA IBT
- G4** TaylorMade Golf Company
- G11** The EcoLogik Institute
- LF14** The Jacobs Institute for Innovation in Education
- AP** The Rosin Box Project
- LF12** The San Diego River Park Foundation
- RF24** Thermo Fisher Scientific
- PB3** Tijuana River National Estuarine Research Reserve
- AP** Tony Washington Art
- G29** TOOTRIS Child Care On-Demand
- CC** U.S. Army
- PA1** U.S. Naval Academy
- LF5** UC San Diego Astronomy and Astrophysics
- WM11** UC San Diego Biomedical Engineering Society
- LF6** UC San Diego Center for Healthy Eating and Activity Research
- G9** University of California San Diego MRSEC
- LF11** University of San Diego STEM Outreach Club
- RF12** Urban Discovery Academy
- HP6** Vertex Pharmaceuticals
- RF6** Vividion Therapeutics
- G18** Wacker Biotech US
- AP** Yin Yu, San Diego State University

# THANK YOU 2025 SPONSORS

**PRESENTED BY:** **illumina**  
CORPORATE FOUNDATION

**PLATINUM** **Biocom California**

**GOLD**

**Bristol Myers Squibb**



**ThermoFisher SCIENTIFIC**

**SILVER**



**COPPER** ASML • MILLIPORESIGMA • QUALCOMM INCORPORATED • SAN DIEGO PADRES

**KRYPTON** CITY OF SAN DIEGO • DPR CONSTRUCTION • GENENTECH, A MEMBER OF THE ROCHE GROUP • GRIFOLS • HANDS-ON TECHNOLOGY EDUCATION • LILLY, A MEDICINE COMPANY • NATIONAL DEFENSE INDUSTRIAL ASSOCIATION • NEUROCRINE BIOSCIENCES • NOVARTIS • PFIZER INC • U.S. ARMY • VIVIDION THERAPEUTICS

**TITANIUM** ARCTURUS THERAPEUTICS • BALFOUR BEATTY • BIOLOGY THROUGH ART • BIOZENIC • BLUE HAVEN POOLS • BOOZ ALLEN HAMILTON • CAMP GALILEO • COLLINS AEROSPACE • DRS DAYLIGHT SOLUTIONS • ESET • GENERAL ATOMICS • HYPERPROOF • JOHNSON & JOHNSON • KENAI THERAPEUTICS • KPBS KIDS • MARAVAI LIFESCIENCES FOUNDATION • MCCARTHY BUILDING COMPANIES, INC. • METROPOLITAN WATER DISTRICT OF SOUTHERN CALIFORNIA • MUSEUM OF CONTEMPORARY ART SAN DIEGO • NATIONAL UNIVERSITY • POINT LOMA NAZARENE UNIVERSITY • SAN DIEGO CITY COLLEGE • SAN DIEGO COMMUNITY POWER • SDCCU • SYSTRA IBT • TAYLORMADE GOLF COMPANY • TOOTRIS • VIASAT • WACKER BIOTECH US

**STEAM CHAMPIONS** CENTREXIT • GENSLER • NAVAIR - FRCSW • NAVAL INFORMATION WARFARE CENTER PACIFIC • NXP SEMICONDUCTORS • PROMO DRONE